

THIS MAP WAS PREPARED FOR
ASSESSMENT PURPOSE ONLY

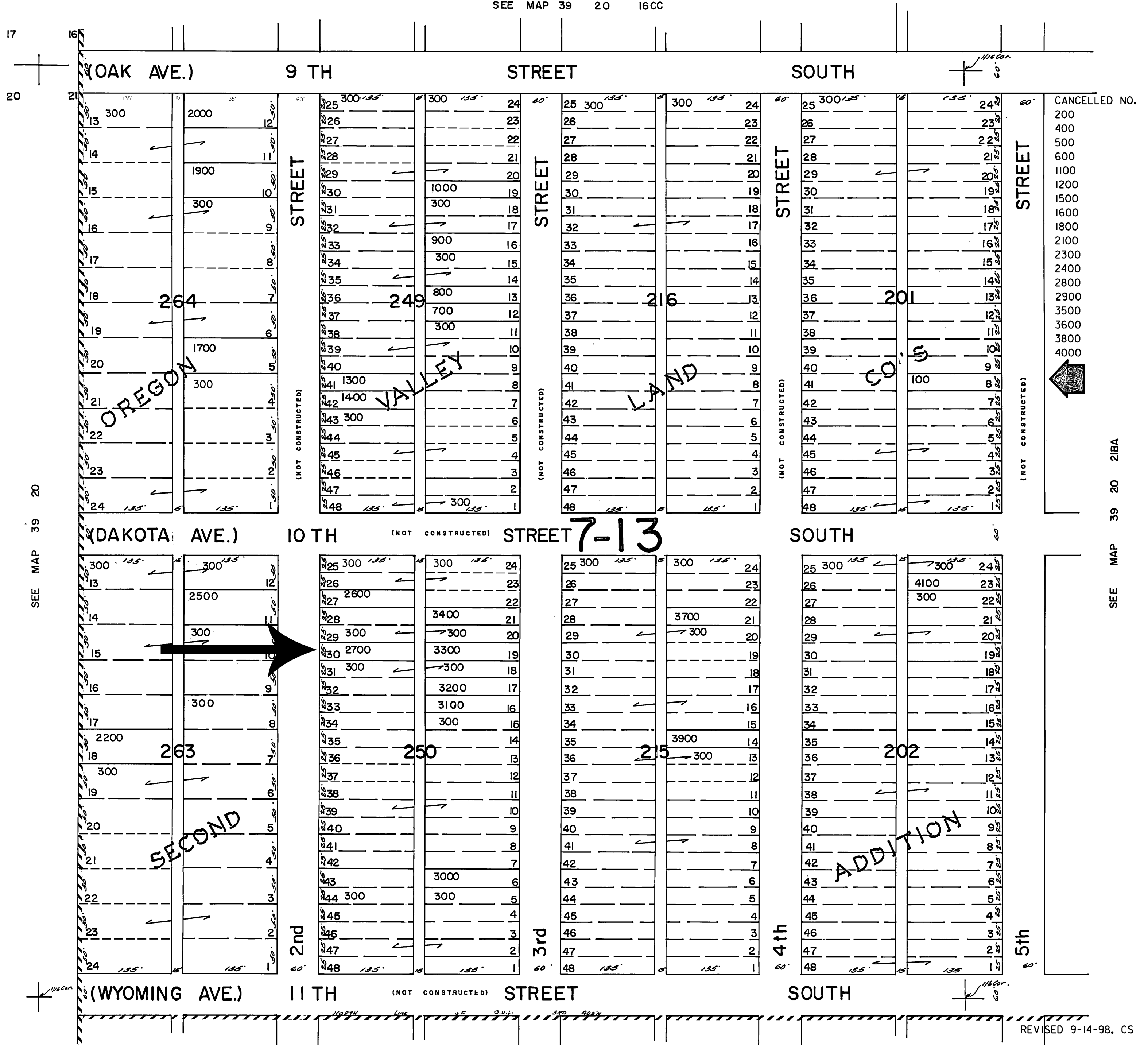
#2008-143

NW1/4 NW1/4 SEC.21 T.39S. R.20E. W.M.
LAKE COUNTY

39 20 21BB
OVL

1"=100'

SEE MAP 39 20 16CC



SEE MAP 39 20

SEE MAP 39 20 21BA

REVISED 9-14-98, CS

SEE MAP 39 20 21BC

39 20 21BB
OVL