

DREWS DEVELOPMENT PHASE III BOUNDARY LIMITS
BLOCKS 7 & 8.

LAND USE ZONE A-3

REGISTERED
PROFESSIONAL
LAND SURVEYOR
Darryl J. Anderson
OREGON
FEB. 4, 1983
DARRYL J. ANDERSON
2034



LEGEND

FOUND 5/8" IRON PIN WITH YELLOW PLASTIC CAP STAMPED PLS 2034
AS PER DREWS DEVELOPMENT PHASE II PLAT

FOUND MONUMENT AS NOTED

FOUND 5/8" IRON PIN WITH YELLOW PLASTIC CAP STAMPED PLS 1279
AS PER DREWS DEVELOPMENT PLAT

FOUND POINT OF BEGINNING MONUMENT AS PER DREWS DEVELOPMENT PHASE II PLAT
6" x 24" CONCRETE MONUMENT WITH BRASS CAP STAMPED P.O.B. PLS 2034. FD. 6" BELOW GROUND.

() INDICATES RECORD INFORMATION AS PER DREWS DEVELOPMENT PHASE II PLAT

(()) INDICATES RECORD INFORMATION AS PER DREWS DEVELOPMENT PLAT

L LENGTH OF CURVE

Δ DELTA ANGLE

— CENTERLINE OF ROAD RIGHT-OF-WAY

● SET 5/8" X 30" IRON PIN WITH YELLOW PLASTIC
CAP STAMPED PLS 2034

R CURVE RADIUS

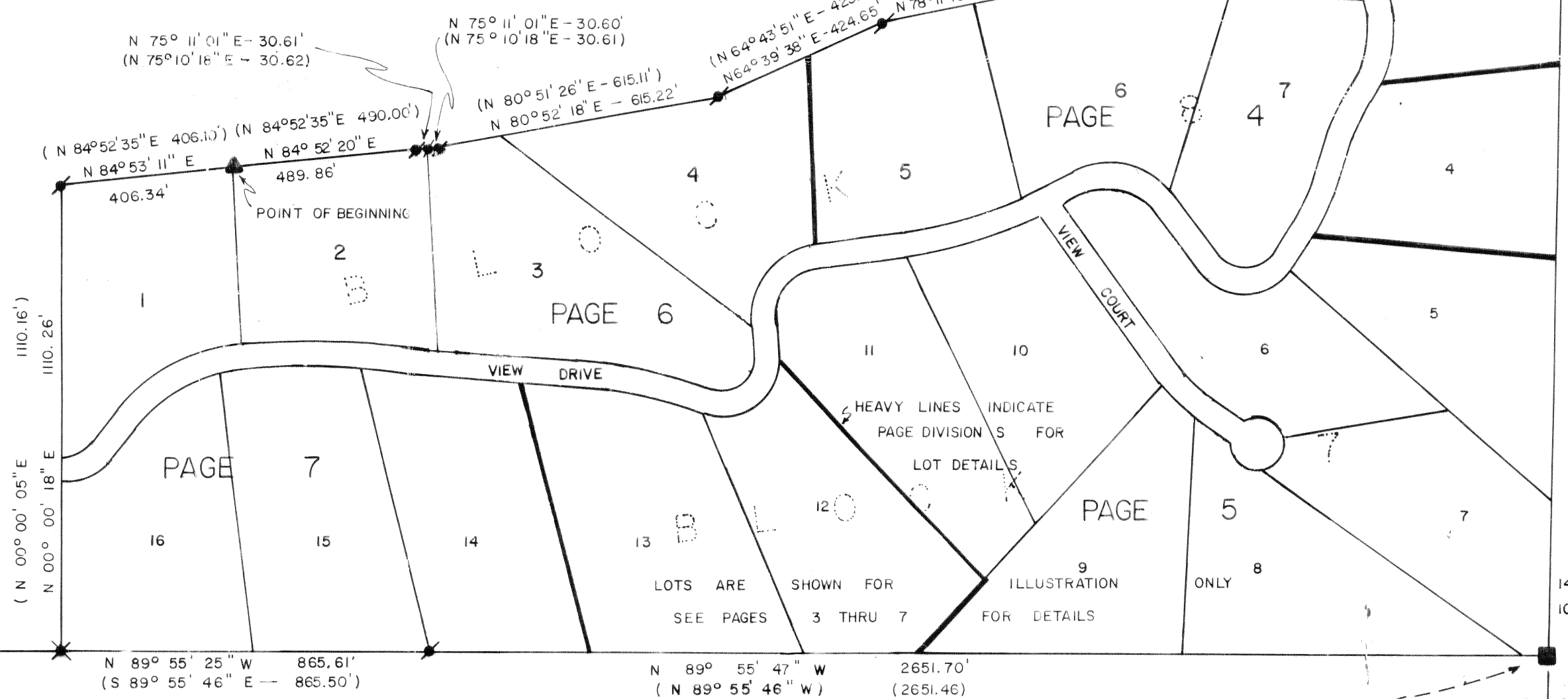
DREWS DEVELOPMENT
LAND USE ZONE A-3

SEE WRITTEN NARRATIVE TO ACCOMPANY BOUNDARY SURVEY

TOPOGRAPHY SHOWN IS APPROXIMATE ON SHEETS 3-7

DREWS DEVELOPMENT PHASE II
LAND USE ZONE A-3

POINT OF BEGINNING BEARS S 64° 49' 46" W - 3496.41' FROM SECTION CORNER $\frac{54}{819}$
(S 64° 50' 06" W - 3496.50')



14" JUNIPER S 3° E, 4.1'
24" JUNIPER N 45° E, 36.7'
20" JUNIPER N 64° W, 35.9'
12" JUNIPER S 63° W, 54.2'

SECTION CORNER
FOUND LAKE
COUNTY
SURVEYORS
BRASS CAP
DATED 1968.

LAKE CO.
T 40 S R 18 E
 $\frac{54}{819}$
LS 640 1988
SURVEYOR

U.S. FOREST SERVICE LAND USE ZONE F-1
S 1° 07' 39" W 2638.47'
(N 1° 07' 56" E 2638.07')

LAKE CO.
T 40 S R 18 E
 $\frac{819}{54}$
LS 640 1988
SURVEYOR

14" PINE S 42° W, 63.3'
10" JUNIPER S 41° E, 89.8'
1/4 CORNER
FOUND LAKE
COUNTY
SURVEYORS
BRASS CAP
DATED 1968.

T 40 S R 18 E
 $\frac{97}{98}$
1982
PLS 1213

1/4 CORNER FOUND
BRASS CAP AS PER
DREWS DEVELOPMENT PLAT
10" JUNIPER S 10° W, 4.1'
5" JUNIPER S 18° E, 14.3'

U.S. FOREST SERVICE LAND USE ZONE F-1

A 363

4945-B