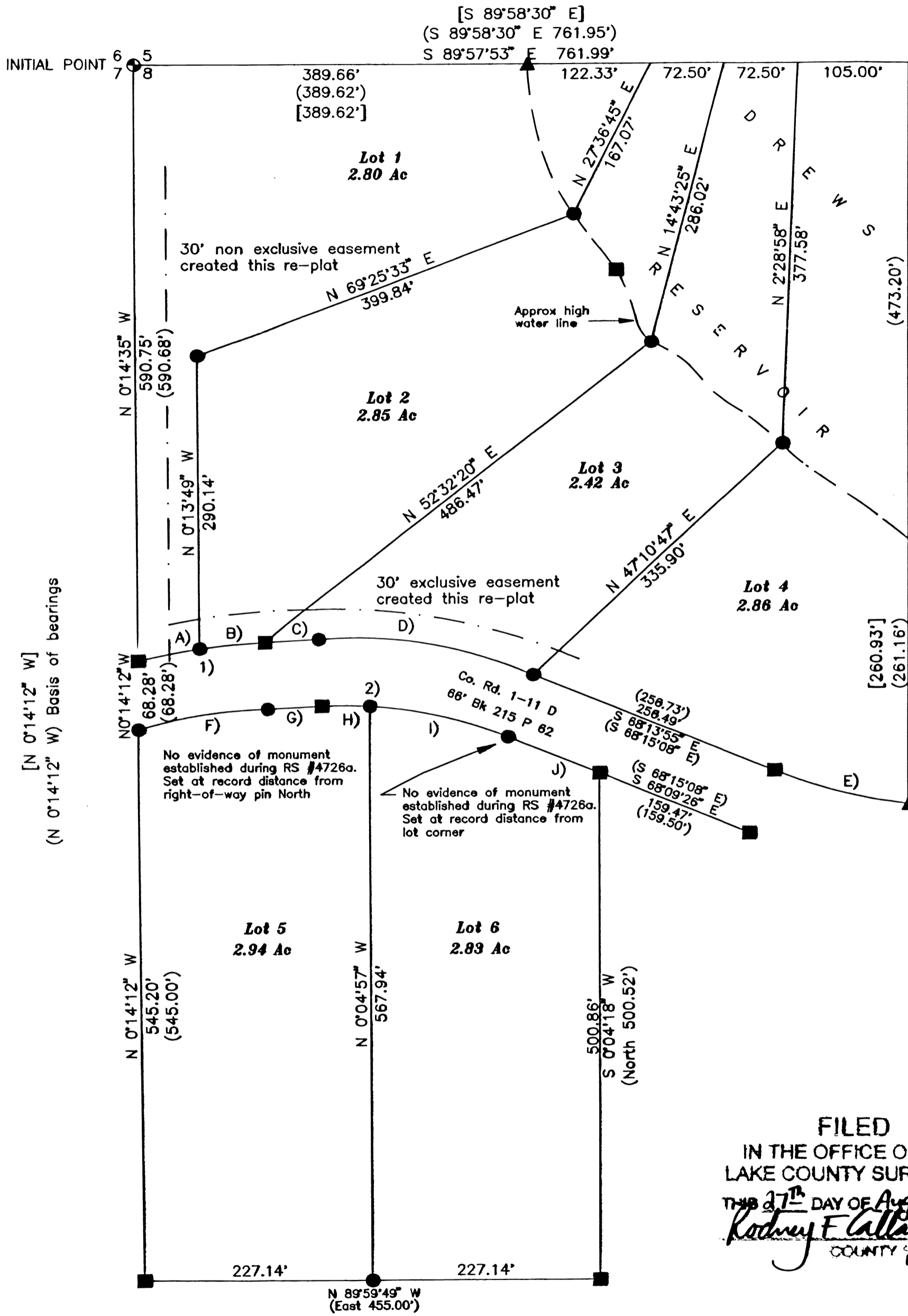


A RE-PLAT OF LOTS 1 & 2, BLOCK 1 AND LOT 1 BLOCK 3 OF DREWS DEVELOPMENT Located in the NW 1/4 Section 8, T.40S. R.18E., W.M.

Lake County, Oregon



Computed at record distance from the West

5/8" iron pin as per RS #3028 found badly bent, not used this survey

Surveyors Certificate

I, Carl E. Sundet, A Registered Professional Land Surveyor in the State of Oregon hereby certify that I have correctly surveyed and marked with proper monuments, as provided by law, the tract of land depicted on this Subdivision Map. The original parcel is described as follows:
A parcel of land located in the NW 1/4 of Section 8, T.40S. R.18E., W.M. more particularly described as:
Lots 1 and 2 of Block 1 and Lot 1 of Block 3 of Drews Development.

REGISTERED PROFESSIONAL LAND SURVEYOR

Carl E. Sundet
OREGON
JULY 14, 1978
CARL E. SUNDET
1664
RENEWS 6/30/02

Approvals

Approved this 1st day of August 2001.

William D. Barry
Lake County Commissioner

Beard Winters
Lake County Commissioner

Jane O'Keeffe
Lake County Commissioner

Approved this 21st day of August 2001.

Donald P. Parker
Chairman, Lake County Planning Commission

Approved this 16th day of July 2001.

Rodney F. Callaghan
Lake County Surveyor

Approved this 27th day of August 2001.

Ray Linn
Planning Director

I hereby certify that all ad valorem taxes and all fees or charges as Per ORS 92.095 have been paid.

Philip W. Sorensen 8/24/01
Lake County Assessor & Tax Collector Date

State Of Oregon
County of Lake

I hereby certify that the attached Subdivision Map was received for record this 27 day of Aug 2001 at 9:25 O'clock A.M. and filed in Plat Cabinet B Sleeve 18 Lake County Records.

Stacie Feaney
Lake County Clerk
By: _____ Deputy

SURVEY FOR: Eddy & Associates, LTD
SURVEY BY: SUNDET & ASSOCIATES
424 NORTH 1ST STREET
P.O. BOX 1228
LAKEVIEW, OREGON 97630
(541) 947-3293

DATE: June 2001
Drawing # 1089

Legend

- Set 5/8" x 30" iron pin with yellow plastic RLS 1664 cap
- Found 5/8" iron pin with LS 1279 cap as per RS #4726a
- ▲ Found 5/8" iron pin as per RS #3028
- ⊙ Found Lake County Surveyor Brass Cap as per Corner Form on file. References not tied
- () Record as per RS #4726a
- [] Record as per RS #3028

Narrative

Purpose: To survey the boundaries of the Eddy & Associates ownership for a partial Re-Plat of Drews Development.
Procedure: Monuments were found as shown and the Lots were laid out as per the owners request.

See Subdivision Map Consent Affidavit and Declaration filed in Deed Volume 253 at Page 313 Lake County Records.

Stacie Feaney
Lake County Clerk

By _____ Deputy

FILED
IN THE OFFICE OF THE
LAKE COUNTY SURVEYOR

THIS 27th DAY OF Aug 2001
Rodney F. Callaghan
COUNTY SURVEYOR

I hereby certify that this map is an exact tracing of the original.

Carl E. Sundet

A) D = 5'36"29" R = 613.68" A = 60.06° C = N78°43'42"E 60.04' T = 30.06'	1 (D = 11'38"29" L = 124.55')
B) D = 6'01"49" R = 613.68" A = 64.59° C = N84°32'51"E 64.56' T = 32.32'	
C) N87°10'21"E 55.31' (N87°26'53"E 55.80')	
D) D = 2'40"07" R = 506.39" A = 218.03° C = S80°28'30"E 216.34' T = 110.73'	(D = 2'48"01" L = 217.57')
E) D = 1'23"33" R = 533.21" A = 133.94° C = S75°24'50"E 133.59' T = 67.33'	(D = 1'42"00" L = 133.79')
F) D = 13'20"50" R = 547.65" A = 127.58° C = S80°53'20"W 127.28' T = 64.08'	(D = 13'21"58" L = 127.61')
G) S97°10'27"W 55.76' (N87°26'53"E 55.80')	
H) D = 6'08"43" R = 440.39" A = 47.23° C = N89°45'11"W 47.21' T = 23.64'	2 (D = 2'48"01" L = 189.58')
I) D = 18'31"24" R = 440.39" A = 142.37° C = S77°24'05"E 141.75' T = 71.81'	
J) S68°09'26"E 97.23' (S68°15'08"E 97.23')	