

Legend

- Set 5/8" x 30" iron pin with yellow plastic RLS 1664 Cap
 - Set railroad spike with brass RLS 1664 tag
 - ▲ Set 60d nail with brass RLS 1664 tag
 - Found 5/8" iron pin with LS 1279 cap as per RS #4726a
 - Found Lake County Surveyor brass cap as per corner form on file. References not tied
- [] Record as per RS #4726a
() Record as per RS #5716

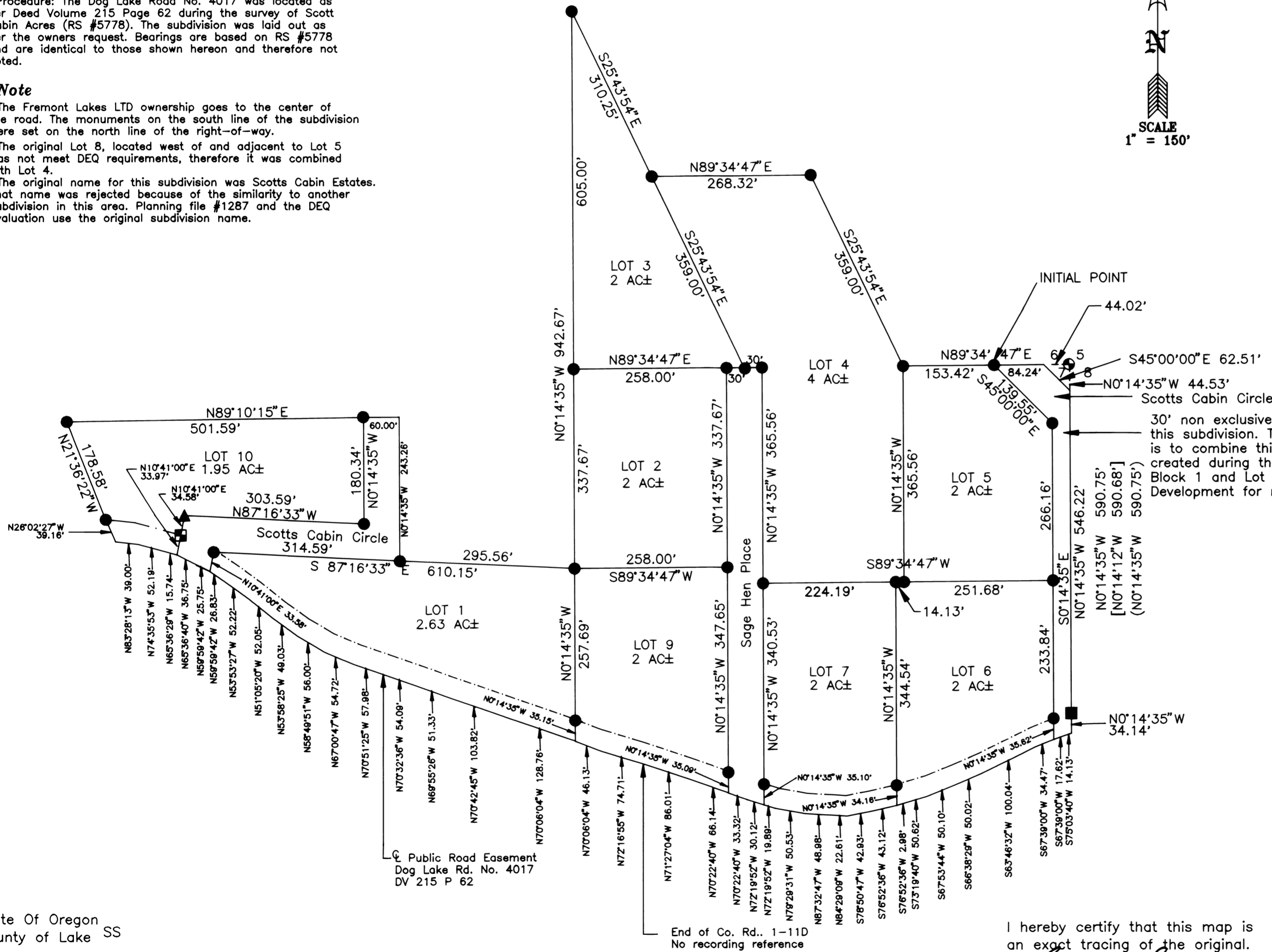
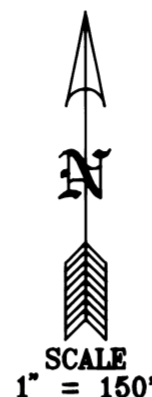
Narrative

Purpose: To survey and monument Scott Cabin Estates
 Procedure: The Dog Lake Road No. 4017 was located as per Deed Volume 215 Page 62 during the survey of Scott Cabin Acres (RS #5778). The subdivision was laid out as per the owners request. Bearings are based on RS #5778 and are identical to those shown hereon and therefore not tied.

Note

The Fremont Lakes LTD ownership goes to the center of the road. The monuments on the south line of the subdivision were set on the north line of the right-of-way.
 The original Lot 8, located west of and adjacent to Lot 5 was not meet DEQ requirements, therefore it was combined with Lot 4.
 The original name for this subdivision was Scotts Cabin Estates. That name was rejected because of the similarity to another subdivision in this area. Planning file #1287 and the DEQ evaluation use the original subdivision name.

**SCOTTS CREEK ESTATES
 PHASE ONE
 A SUBDIVISION
 SE 1/4 Section 6 & NE 1/4 Section 7
 T.40S. R.18E., W.M.
 Lake County, Oregon**



30' non exclusive easement created this subdivision. The intent of the owner is to combine this easement with the one created during the Re-Plat of Lots 1 & 2, Block 1 and Lot 1, Block 3 of Drews Development for road purposes.

Surveyors Certificate

I, Carl E. Sundet, A Registered Professional Land Surveyor in the State of Oregon, hereby certify that I have correctly surveyed and marked with proper monuments, as provided by law, the tract of land depicted on this Subdivision Map. The original parcel is described as follows:
 A parcel of land located in the SE 1/4 of Section 6 and the NE 1/4 of Section 7, T.40S. R.18E., W.M., Lake County, Oregon more particularly described as:
 Beginning at the Initial Point, which is a 5/8" iron pin located S89°34'47" W a distance of 128.26' from the NE Section Corner Section 7 thence N89°34'47" E a distance of 84.24', thence S45°00'00" E a distance of 62.51', thence S0°14'35" E a distance of 580.36', thence S75°03'40" W a distance of 14.13', thence S67°39'00" W a distance of 17.62', thence S67°39'00" W a distance of 34.47', thence S63°46'32" W a distance of 100.04', thence S66°38'29" W a distance of 50.02', thence S67°53'44" W a distance of 50.10', thence S73°19'40" W a distance of 50.62', thence S76°52'36" W a distance of 2.98', thence S78°50'47" W a distance of 43.12', thence S78°50'47" W a distance of 42.93', thence N84°29'09" W a distance of 22.61', thence N87°32'47" W a distance of 48.98', thence N79°29'31" W a distance of 50.53', thence N72°19'52" W a distance of 19.89', thence N72°19'52" W a distance of 30.12', thence N70°22'40" W a distance of 33.32', thence N70°22'40" W a distance of 66.14', thence N71°27'04" W a distance of 86.01', thence N72°16'55" W a distance of 74.71', thence N70°06'04" W a distance of 46.13', thence N70°06'04" W a distance of 128.76', thence N70°42'45" W a distance of 103.82', thence N69°55'26" W a distance of 51.33', thence N70°32'36" W a distance of 54.09', thence N70°51'25" W a distance of 57.98', thence N67°00'47" W a distance of 54.72', thence N58°49'51" W a distance of 56.00', thence N53°58'25" W a distance of 49.03', thence N51°05'20" W a distance of 52.05', thence N53°53'27" W a distance of 52.22', thence N59°59'42" W a distance of 26.83', thence N59°59'42" W a distance of 25.75', thence N65°36'40" W a distance of 36.75', thence N65°36'29" W a distance of 15.74', thence N74°35'53" W a distance of 52.19', thence N83°28'13" W a distance of 39.00', thence N26°02'27" W a distance of 39.16', thence N21°36'22" W a distance of 178.58', thence N89°10'15" E a distance of 561.59', thence S0°14'35" E a distance of 243.26', thence S87°16'33" E a distance of 295.56', thence N0°14'35" W a distance of 942.67', thence S25°43'54" E a distance of 310.25', thence N89°34'47" E a distance of 268.32', thence S25°43'54" E a distance of 359.00', thence N89°34'47" E a distance of 153.42' to the Initial Point and the point of beginning.

REGISTERED
 PROFESSIONAL
 LAND SURVEYOR
 Carl E. Sundet
 OREGON
 JULY 14, 1978
 CARL E. SUNDET
 1664
 RENEWS 6/30/04

Approvals

- Approved this 18th day of December 2002.
Brad Winter
 Lake County Commissioner
- Approved this 18th day of December 2002.
Jane O'Keller
 Lake County Commissioner
- Approved this 18th day of December 2002.
William D. Barry
 Lake County Commissioner
- Approved this 17th day of December 2002.
Rodney F. Callaghan
 Lake County Surveyor
- Approved this 19 day of December 2002.
Donald P. Parke
 Planning Commission Chairman
- Approved this 16th day of December 2002.
Ray Thomas
 Planning Director
- I hereby certify that all ad valorem taxes and all fees or charges as Per ORS 92.095 have been paid.
Philip McConal 12/17/02
 Lake County Assessor & Tax Collector Date

I hereby certify that this map is an exact tracing of the original.
Carl E. Sundet

See Subdivision Map Consent Affidavit and Declaration filed in Deed Volume 257 at Page 531 Lake County Records.

FILED
 IN THE OFFICE OF THE
 LAKE COUNTY SURVEYOR
 THIS 20th DAY OF DEC 2002
Rodney F. Callaghan
 COUNTY SURVEYOR

State Of Oregon
 County of Lake SS
 I hereby certify that the attached Subdivision Plat was received for record this 20 day of December 2002 at 9:45 O'clock A.M. and filed in Plat Cabinet B Sleeve 41 Lake County Records.
Sadie Grawley, Lake County Clerk
 By: *Justin A. Claw* Deputy

By: *Justin A. Claw* Deputy

SURVEY FOR: FREMONT LAKES LTD
 SURVEY BY: SUNDET & ASSOCIATES
 424 NORTH 1ST STREET
 P.O. BOX 1228
 LAKEVIEW, OREGON 97630
 (541) 947-3293
 DATE: SEPTEMBER 2002
 Drawing # 1125